

Supplement of Geosci. Model Dev., 11, 4577–4602, 2018
<https://doi.org/10.5194/gmd-11-4577-2018-supplement>
© Author(s) 2018. This work is distributed under
the Creative Commons Attribution 4.0 License.



Supplement of

The NASA Eulerian Snow on Sea Ice Model (NESOSIM) v1.0: initial model development and analysis

A. A. Petty et al.

Correspondence to: Alek A. Petty (alek.a.petty@nasa.gov)

The copyright of individual parts of the supplement might differ from the CC BY 4.0 License.

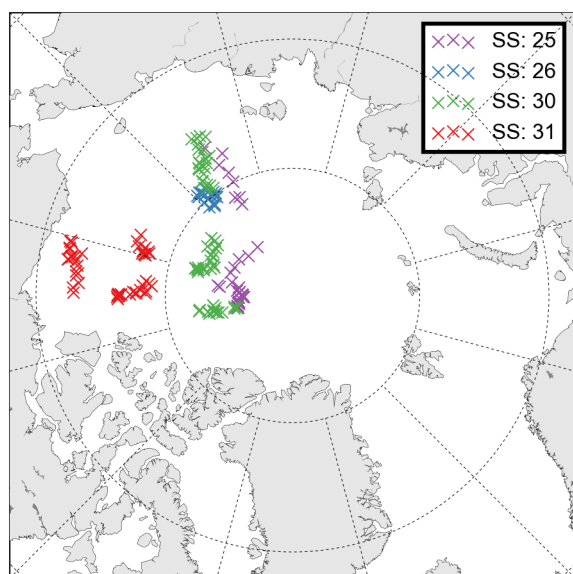


Figure S1: Map of the drifting Soviet station data used in this study. The number indicates the respective station number.

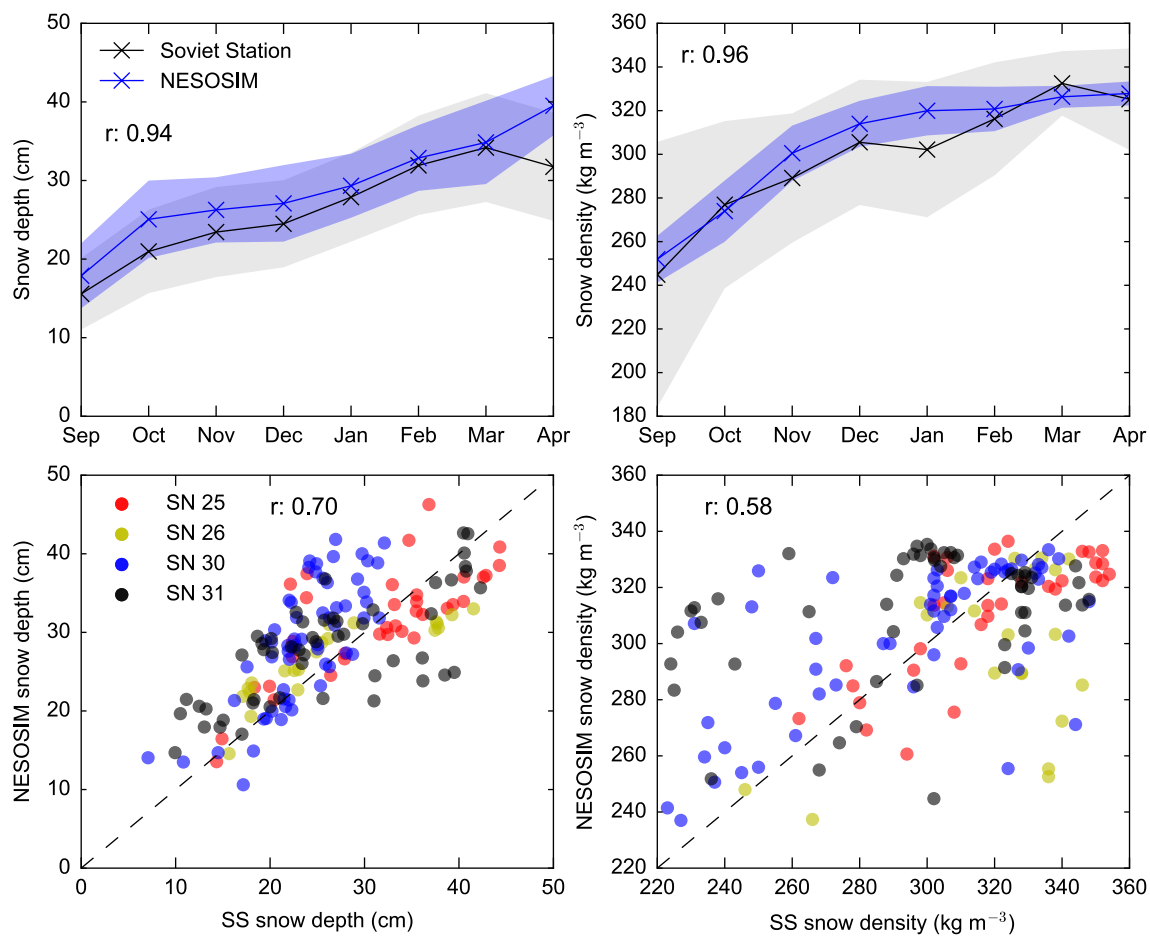


Figure S2: As in Figure 5 but for NESOSIM forced by the JRA-55 snowfall data.

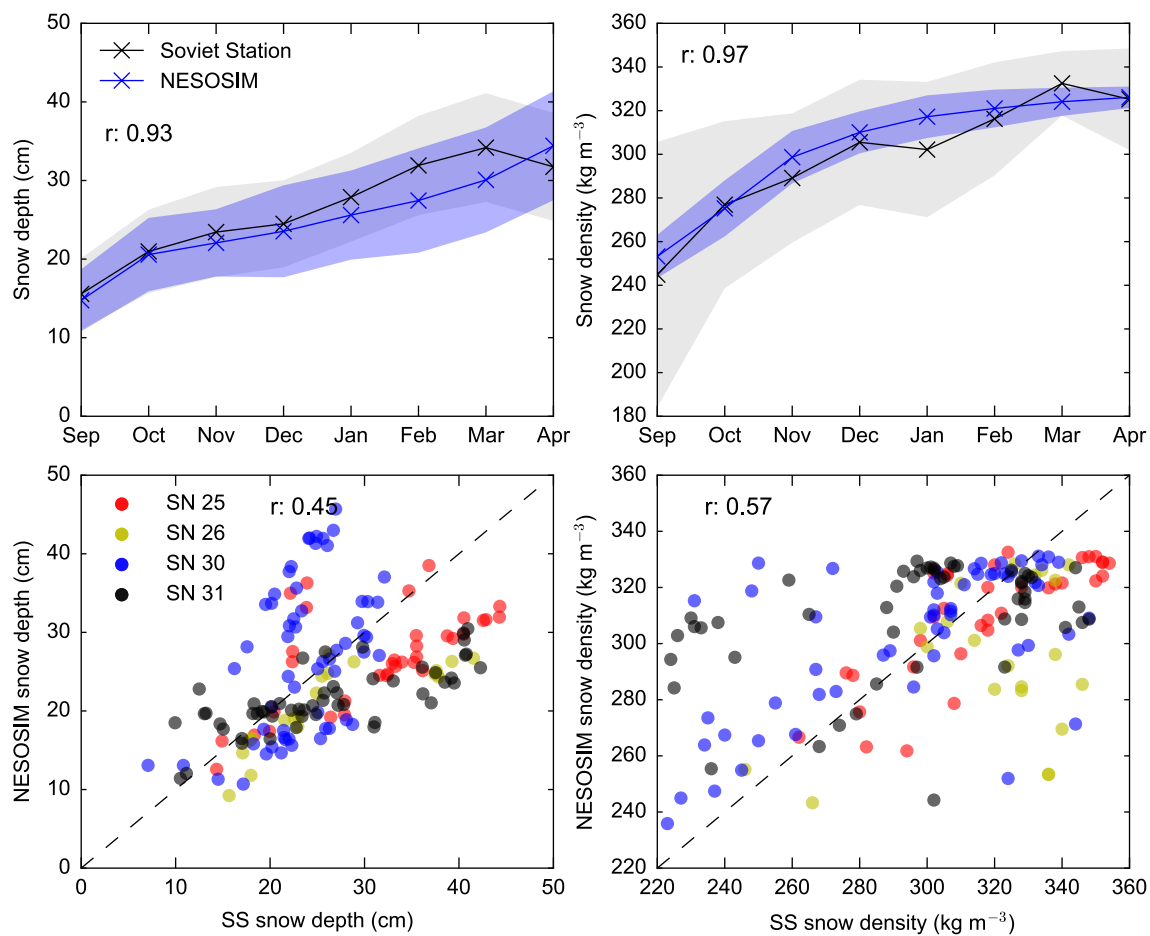


Figure S3: As in Figure 5 but for NESOSIM forced by the MERRA snowfall data.

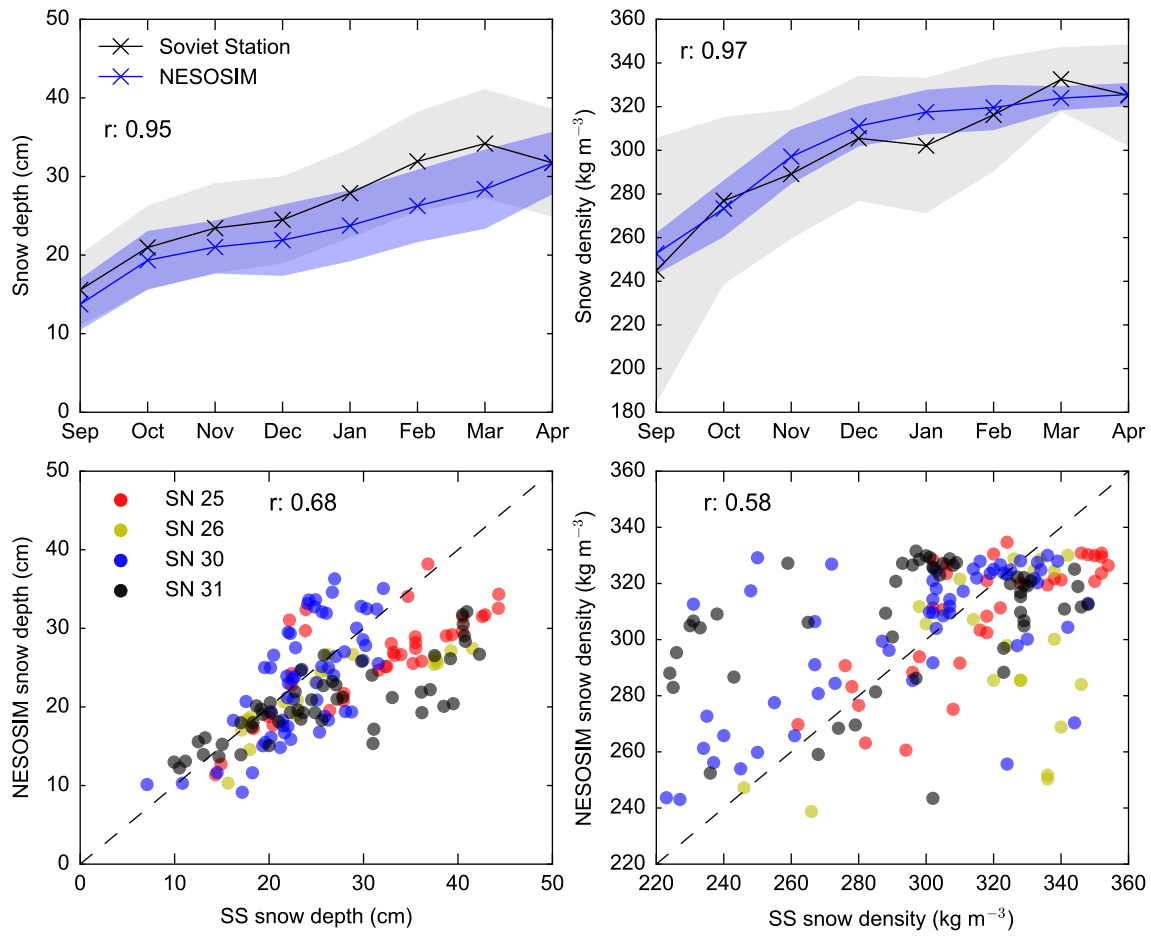


Figure S4: As in Figure 5 but for NESOSIM forced by the MEDIAN-SF snowfall data.

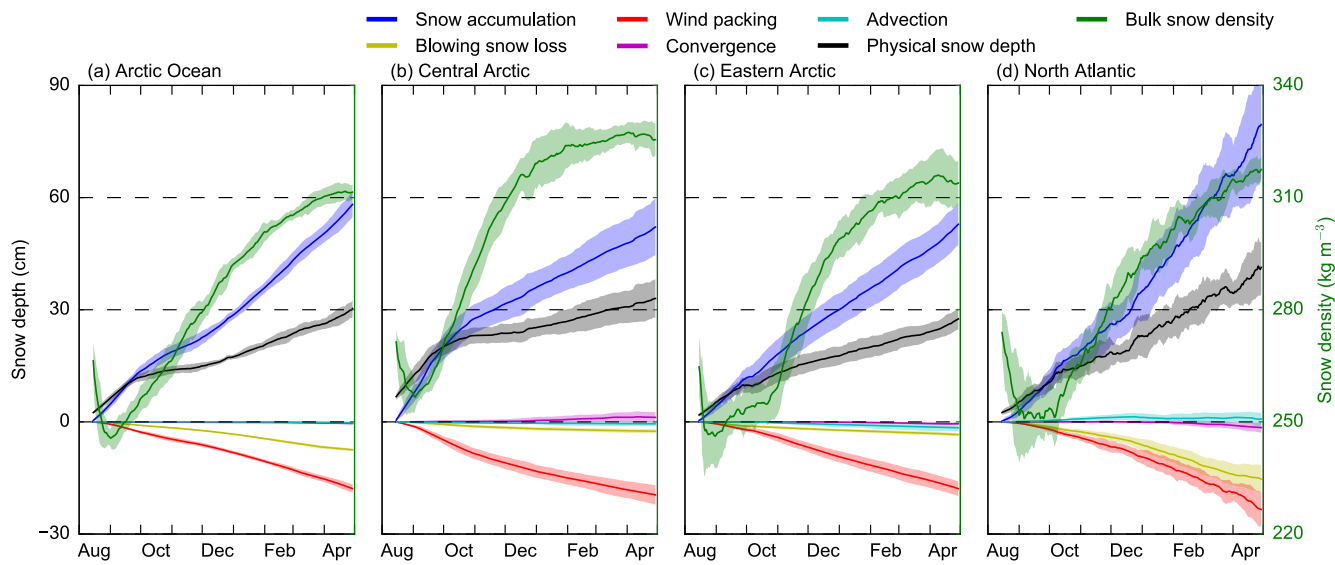


Figure S5: As in Figure 8 but for the regional snow depth/density results initiated on August 15th 1980-1990.

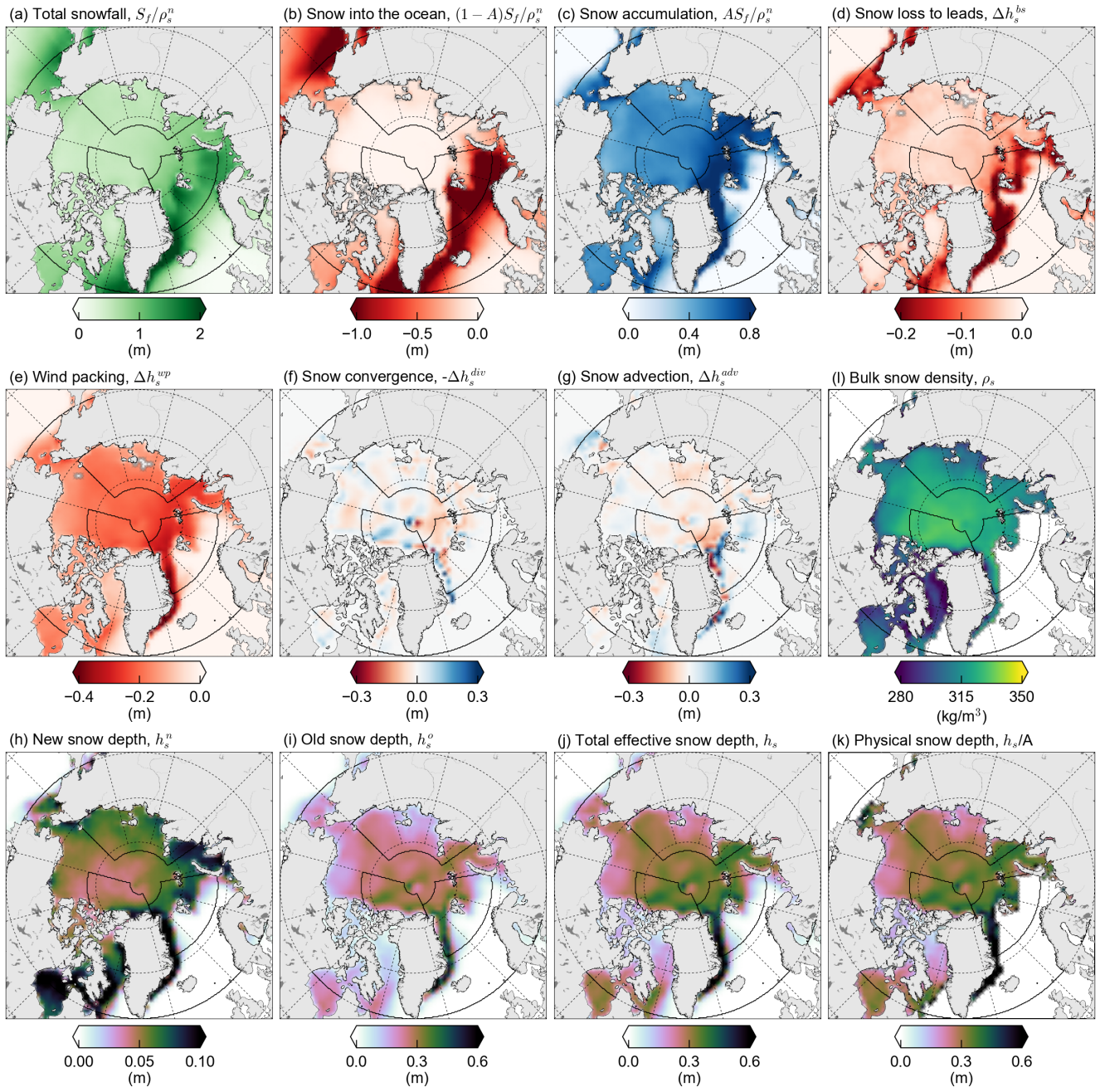


Figure S6: As in Figure 9 but for the 1981-1991 May 1st mean budget terms.

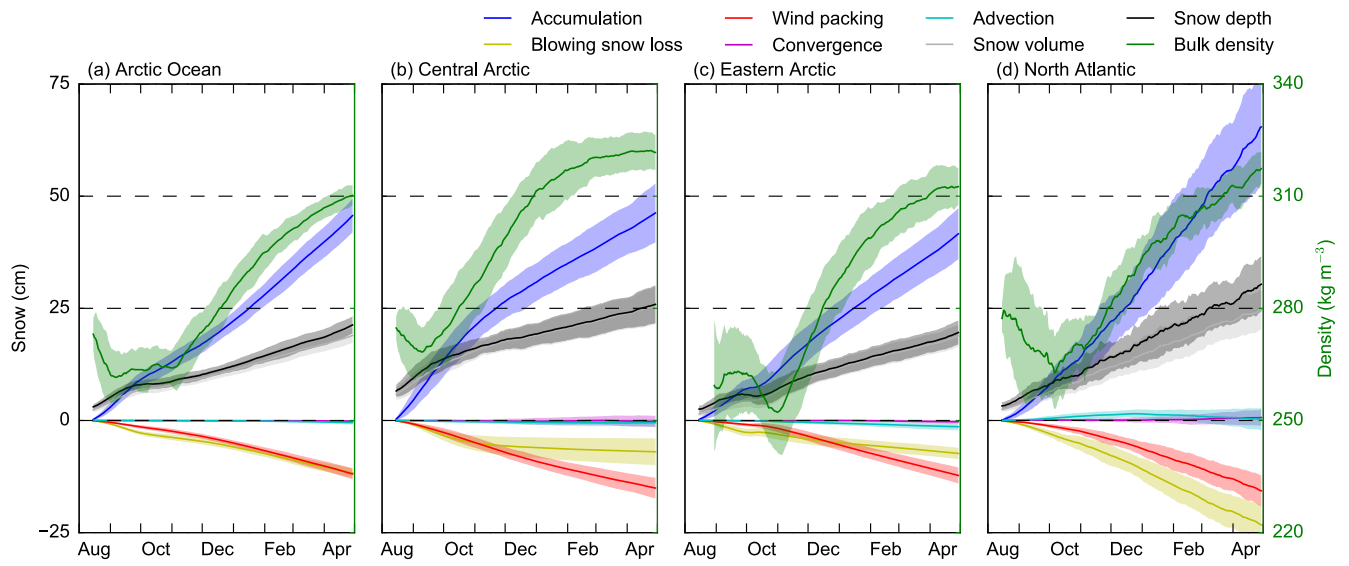


Figure S7: As in Figure 8 but for the default/ERA-I NESOSIM simulations forced with the NASA Team ice concentration data.

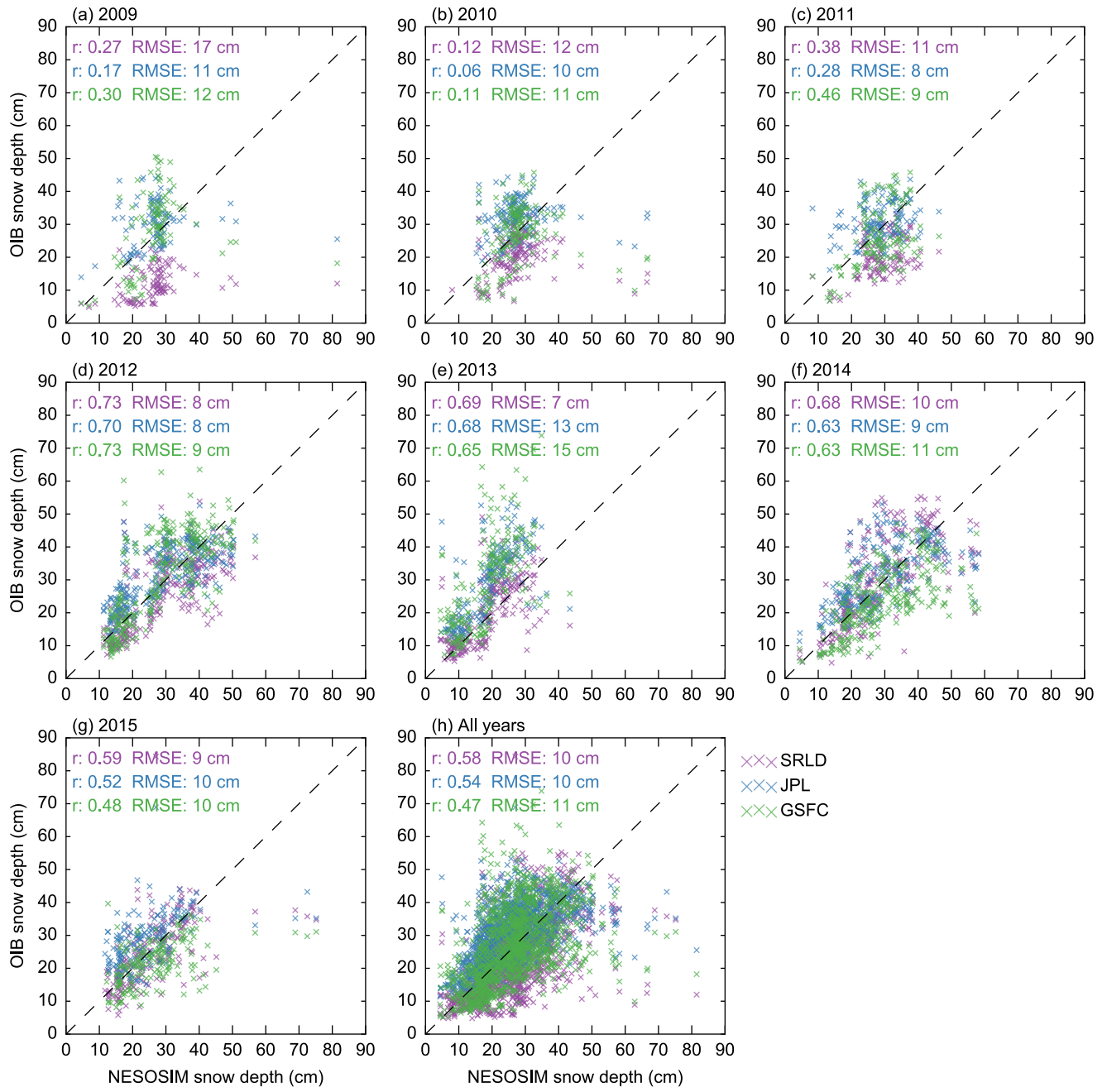


Figure S8: As in Figure 15 but for the regressions shown separately for the various years (and all years, h). The correlation coefficients and root mean squared errors are also shown in Table 5.

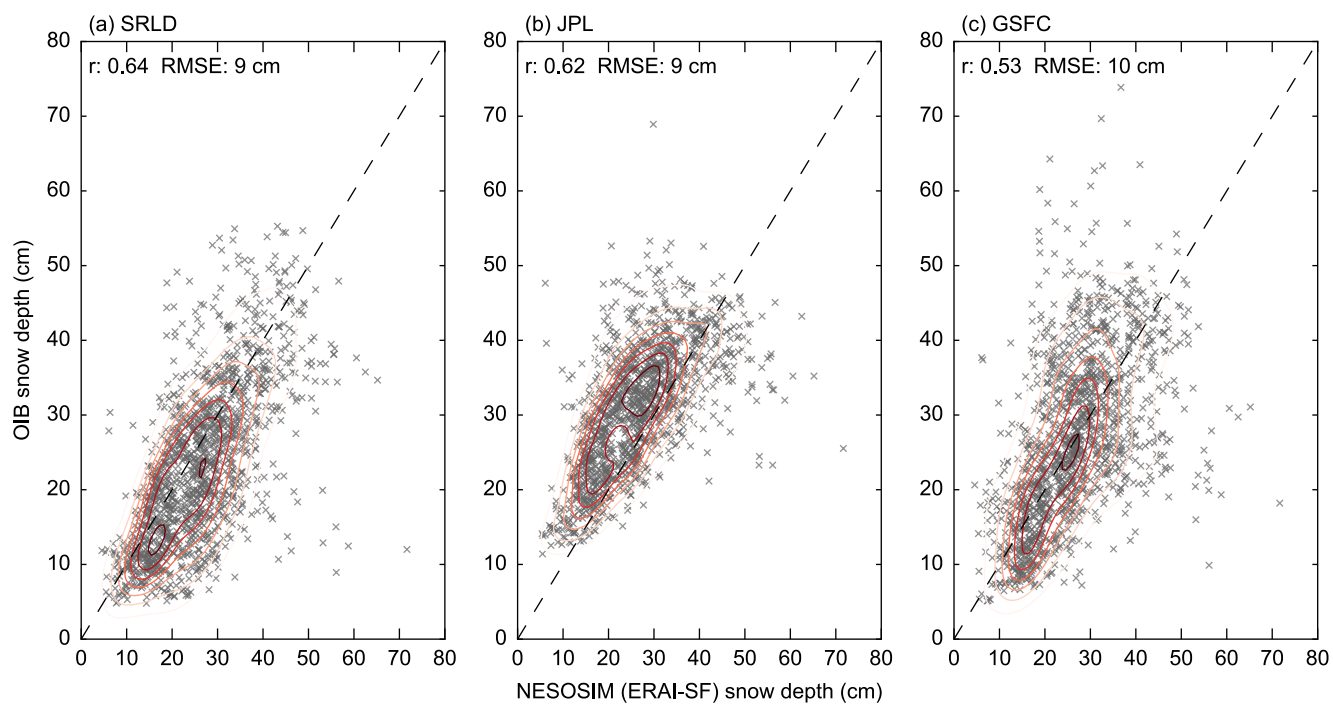


Figure S9: As in Figure 15 but for the ERAI forced simulations.

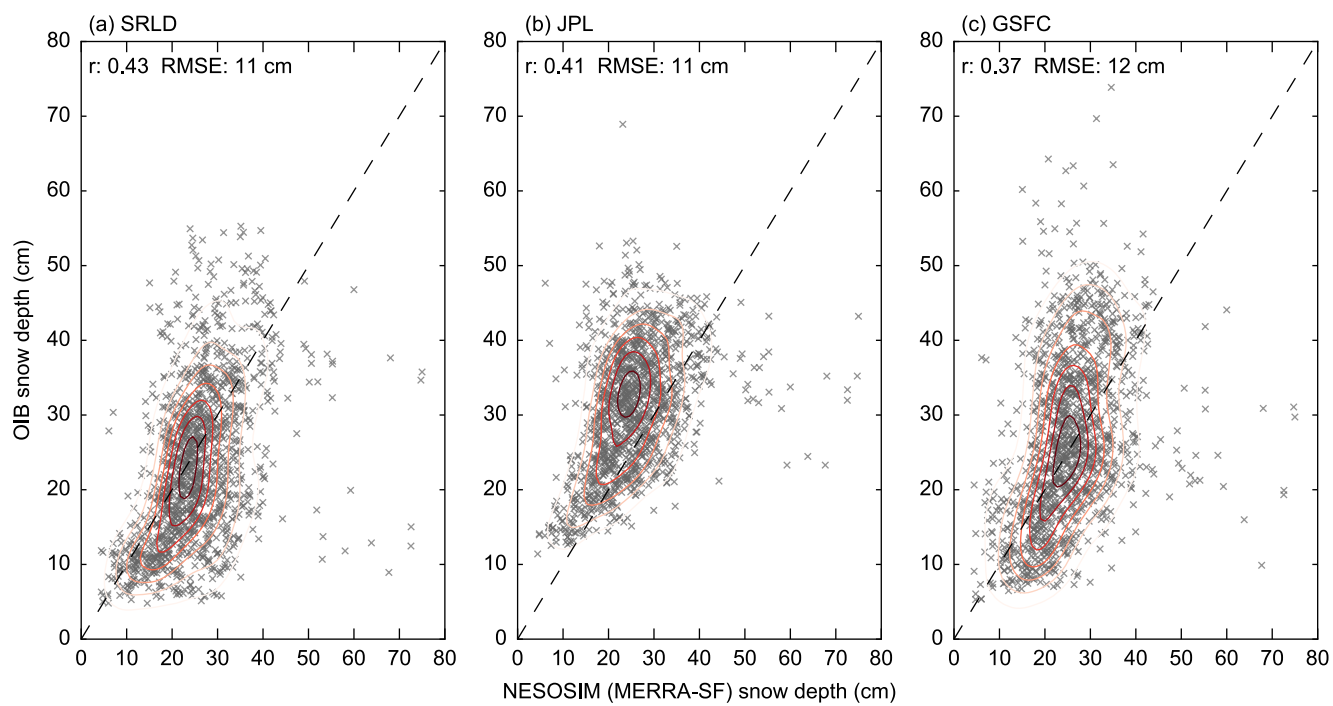


Figure S10: As in Figure 15 but for the MERRA forced simulations.

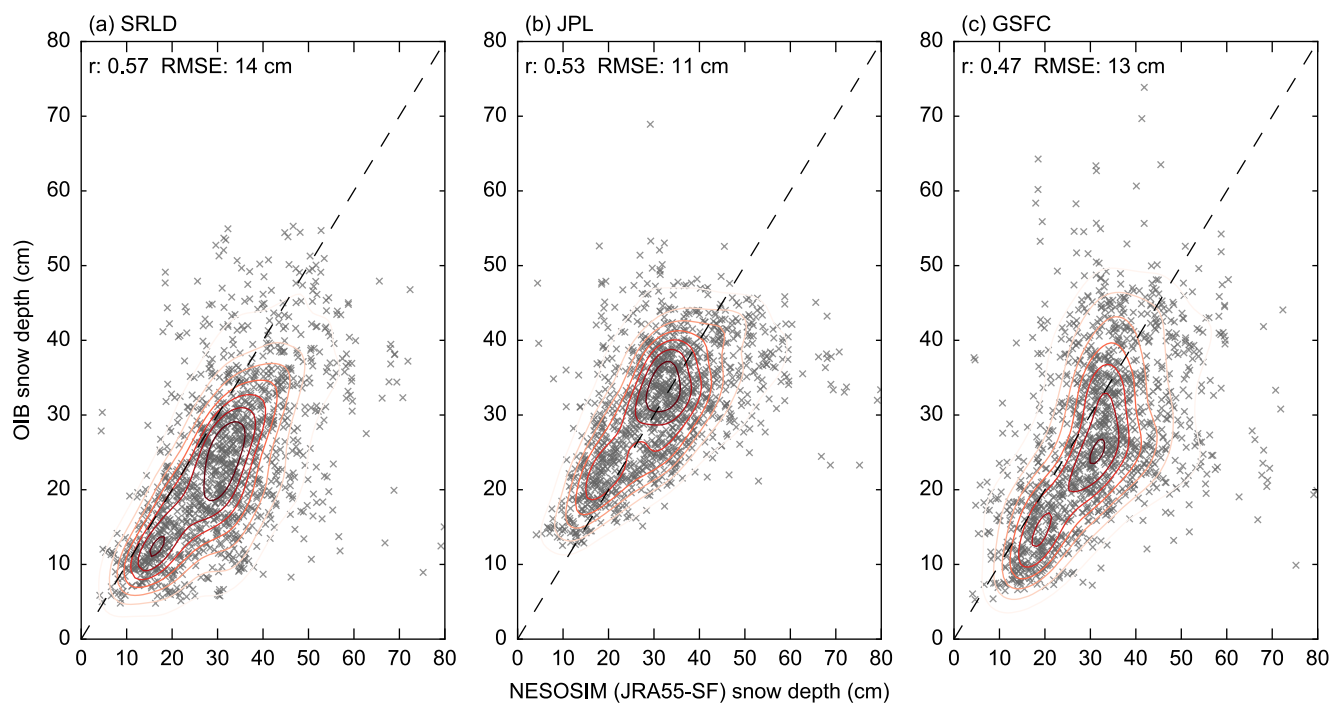


Figure S11: As in Figure 15 but for the JRA-55 forced simulations.

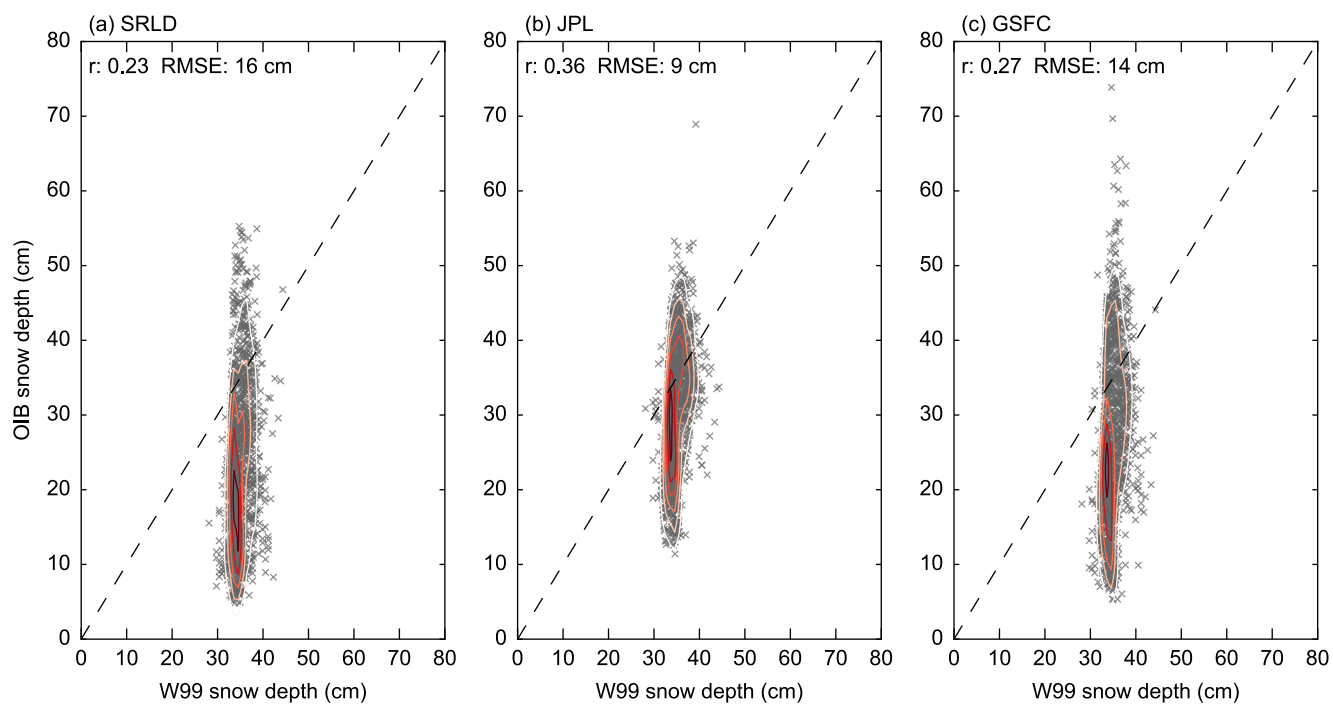


Figure S12: As in Figure 16 but for the unmodified Warren climatology.